



Perfect Blue Film Soundtrack

...

Dori Booker
6th Hr. Film Study

Background Information

Perfect Blue is Japanese psychological horror animated film released in 1997 and directed by Satoshi Kon. An adaptation of a book of the same name it follows the main character Mima Kirigoe who's the leader of a J-pop group called CHAM! Who wants to explore the world of acting and leaves the group in her pursuit. She's periodically stalked by a fan who is angry that she is leaving the group. In one of the shows she's in she takes a particular scene that deeply affects her negatively and as a result of this she starts so spiral seeing visions of herself as her former idol self who claims to be "The real Mima." Murders around her start to occur and she is the prime suspect. It is revealed that a close confidant of hers is actually the perp behind the murders and stalking who is obsessed with becoming her.



Song 1 + Connection - Oblivion (Grimes)

The first song I decided to choose for the film is Oblivion by Grimes. This song connects to the film because it is about not being vigilant as someone is stalking you. A big subplot of the film is that Mima is being stalked by a fan through her online diary and he is using this info to find her. Not only is it him but as mentioned before it turns out that one member of her circle is the one behind the stalking in every way and it shows that Mima was not vigilant enough to realize who is behind the stalking.



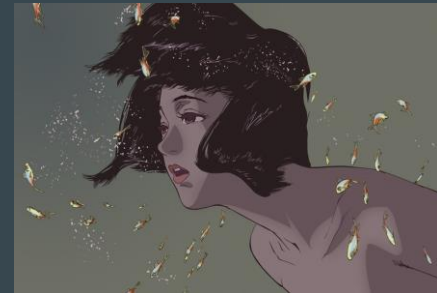
Song 2 + Connection - YKWIM (Yot Club)

The second song I decided to use in the soundtrack is YKWIM by Yot Club. This connects to the film because it's about loneliness and having nobody that truly cares for you. Towards the middle of the film, Mima starts to feel extremely isolated as she doesn't have her music group and getting work for acting for her is sparse. This loneliness factor contributes heavily to her downward spiral because she has no one to snap her back to reality and to not enable her erratic behavior.



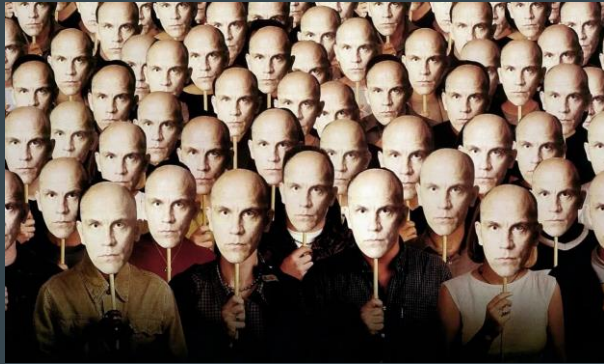
Song 3 + Connection - My Future (Billie Eilish)

The last song I decided to choose and connection is My Future by Billie Eilish. This song is about someone finding their future in themselves and celebrating self made success. On a lighter note, at the end of the movie after the final confrontation with Rumi it fast forwards to the future where Mima is a well known actress and it shows the fact that she persevered and is now in control of herself and has success in the field she accomplished.



Conclusion

In conclusion, Perfect Blue is a multi-faceted movie with many different themes and subplots and is worth watching as it has influenced the horror and animated horror genre greatly.



Sources

- Wikipedia
- IMDB
- Letterboxd